



World Leading Steel Fabrication Management Information Software

Streamlining and simplifying all of your steel fabrication projects and resources

THE FUTURE OF STEEL FABRICATION

Used worldwide to reduce costs while maximising productivity, increasing profitability, reducing errors and increasing efficiency by providing complete project traceability; in every step of the steel fabrication process.

STRUMIS will connect your business resources reducing time, cost and wastage for greater efficiencies, traceability and productivity

Give your company the competitive edge

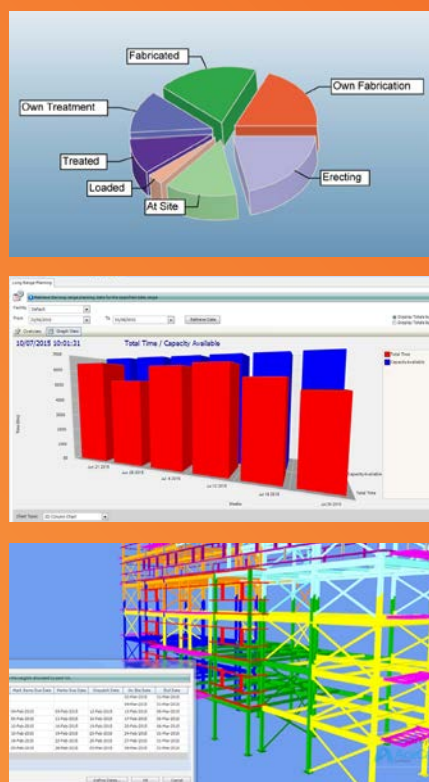
Bringing Structure to Steel in the 21st Century

Steel fabrication best practices in the 21st Century call for the utilisation of technology to stay ahead of the fabrication curve and remain both relevant and profitable in an ever more dynamic industry. The application of software in the steel fabrication process is no longer a nouveau concept, but rather a vital standard fabrication management practice. Software systems, such as STRUMIS, serve the largest and smallest fabricator alike and enable the fabricator to successfully manage their business and mitigate risk, ensuring transparency throughout each department, and safeguarding management of resources effectively.

STRUMIS' bi-directional links with partner systems enables fabricators and detailers to make quick, informed decisions to minimise cost and disruption, by seeing real-time status for materials and manufacturing progress.

Industry Leader

Adopting STRUMIS is acknowledged as a commitment to business excellence; this will attract new customers while also improving existing customer satisfaction.



Benefits:

- Increase Productivity
- Save Time, Reduce Costs
- Real Time Traceability
- Streamline Workflow
- Maximise Material Efficiencies
- BIM Collaborative Communication
- Facilitating CE Marking

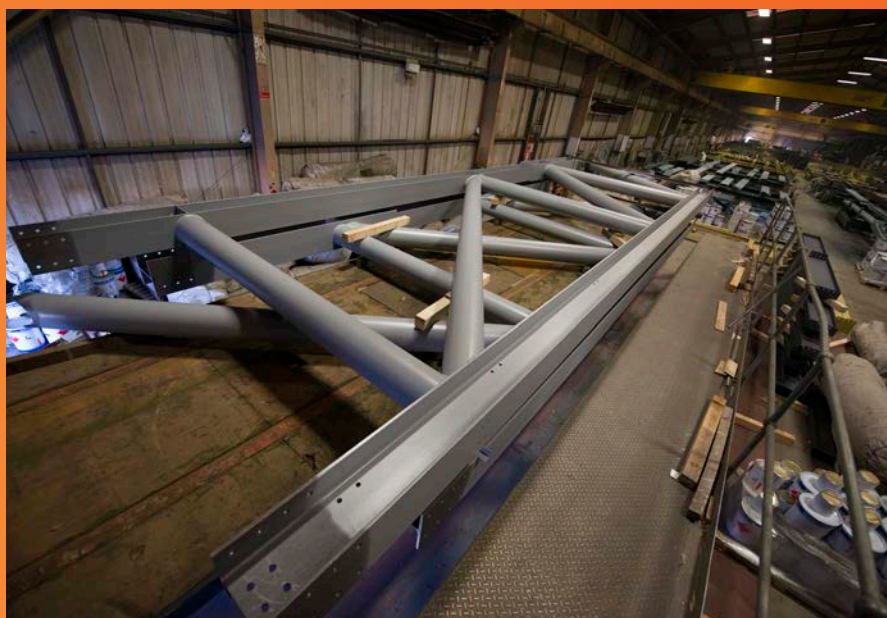
Advanced Integration



KALTENBACH



STRUMIS enables companies to increase efficiency and improve profitability



Production Control

Configure STRUMIS to route every part and assembly through your workshop...automatically! Then track each component through the fabrication process using Barcoding, iPhone/Android App or Workshop Consoles – for true real-time traceability.

Estimating

Increase your number of bids by importing BIM models or 2D electronic take-offs and applying automated Labor and Connections to speed up your Estimating process. At the same time improve your success rate by analysing historic patterns to target the right projects.

Prelim Listing

Get ahead of the game by ordering long-lead or high-volume sections from the ABM. Interrogate STRUMIS stock to ensure material is not ordered unnecessarily.

CAD Integration

Import every last nut, bolt and washer with STRUMIS advanced integration with the industry's leading CAD systems. Critical information such as purchasing, fabrication and delivery status is automatically fed back into the model for improved decision making.

Documents, Transmittals & RFIs

Manage and control all your project documents in a single location, and log and track all RFIs for transparency across the project.

Production Planning

STRUMIS provides integrated Long Range and Detailed Planning tools for complete accuracy when planning your workshops.

Job Costings

Track every pound spent on every job with STRUMIS Budgets –with real-time monitoring of orders, inventory transactions and timesheets.

Purchasing

Streamline procurement and reduce waste using STRUMIS bar and plate optimisation. Send RFQs for competitive pricing and utilize EDI to automate the process.

Features and Modules



Inventory & Material Traceability

Manage your materials across multiple locations; from the moment they are ordered until they are sent to site with STRUMIS Inventory. Record Cast Numbers and store the MTRs for complete material traceability.



BIMReview

STRUMIS' uniquely integrated BIMReview tool provides 3D visualisation, communication and real-time status updates to all project parties – from kick-off to on-site installation.



BRINGING
STRUCTURE
TO STEEL

STRUMIS Pays for Itself

STRUMIS pays for itself within the first financial year via the savings generated.
Find out exactly the efficiencies that can be made for your organization using STRUMIS'
Cost Savings Calculator at www.strumis.com

What Our Clients Say

As one of the original users of the system we can confidently say that STRUMIS has added to our ability to compete effectively. By linking our Inventory with Procurement and Production, STRUMIS enables agile procurement based on optimised project planning and shop floor routing, such that materials are ordered and delivered just in time. This results in better time management and cost savings for our business.

- Billington Structures

We are now utilising everything STRUMIS provides in just 4 months of implementation. We're entirely pleased with our choice of STRUMIS and would thoroughly recommend both this system and the services that STRUMIS has to offer.

- BHC Ltd

We are convinced that STRUMIS offers the most complete and advanced product features and that the software will enable us to more efficiently deliver value across our businesses. The STRUMIS system is considered to be the pinnacle of technology for steelwork fabrication and fits with our culture of technology based engineering, construction and steelwork fabrication to provide our clients with quality projects, on time; and within budget.

- Cleveland Bridge UK Ltd



Your **Free** Consultation

Simply contact us to arrange a free consultation,
to see how you can start saving time and money, today:

Tel: +44 (0) 1332 545800

E-mail: sales@strumis.com

Website: www.strumis.com



STRUMIS LTD

Truro House, Stephenson's Way, Wyvern Business Park, Derby, DE21 6LY, United Kingdom

All information relates to the current software edition. As part of our commitment to continual product development, product and information is subject to change without prior notice. STRUMIS LTD cannot be held responsible for any inadvertent errors. All product names/logos mentioned are the trademark of their respective holders. © Copyright 2017 STRUMIS LTD, All rights reserved.